

What Gippsland wants according to C4G

IT'S only February but the Committee for Gippsland is getting in early with its priorities for Gippsland in this year's Victorian State Budget.

The Committee for Gippsland has written to Victorian Treasurer Tim Pallas outlining its key priorities for Gippsland including a business case for a new hospital for West Gippsland, funding for vital roads and infrastructure projects, improving the region's education opportunities and ensuring unconditional funding for critical irrigation upgrades in the Macalister irrigation district while producing a long-term vision for the growing agriculture and resource sector.

With the funded services plan almost completed, the

natural next step is now a business case for a new West Gippsland Hospital.

CEO of the Committee for Gippsland, Mary Aldred said that it is important that the Victorian Government maintains momentum by committing funding for a business case into a new hospital.

"With the anticipated growth across West Gippsland set to reach 100,000 people by 2030, it is vital that community infrastructure like healthcare can keep pace with growth," Ms Aldred said.

Transport and infrastructure has also featured heavily in the Committee for Gippsland's budget submission with a particular focus on the Traralgon bypass, the sealing

of South Face Road to Mount Baw Baw and upgrading the South Gippsland Highway.

"Improving local roads will not only directly improve the safety and efficiency of Gippsland road networks but will also increase tourism opportunities and help local exporters get their products to market and to consumers in a more direct and cost effective manner.

"While Gippsland has enormous potential to increase tourism and become the delicatessen of the world it is important that the infrastructure, roads and services are in place to ensure that Gippsland can continue to prosper.

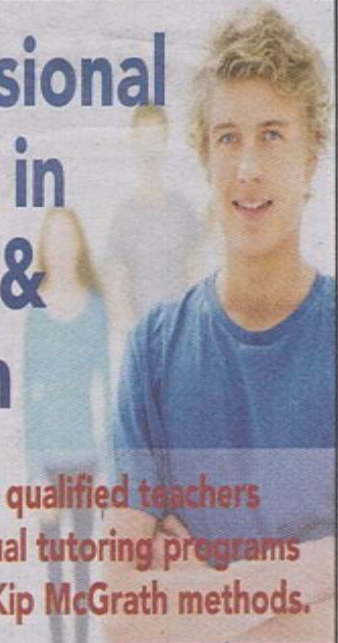
"This is why it is important that the Victorian Government

provides the required funding for the Phillip Island Nature Park Summerland Infrastructure Master Plan which will cement its future as one of Australia's leading tourism destinations.

"With the agriculture industry booming it is important that these sectors are supported by long-term, sustainable government policies that will attract continued investment in the Gippsland region as well as increasing export opportunities," Ms Aldred said.

The Committee for Gippsland also called for continued implementation of funding towards important community leadership programs such as the Gippsland Community Leadership Program.

Professional tuition in maths & English



Kip McGrath's qualified teachers create individual tutoring programs using proven Kip McGrath methods.

- Maths
- Reading
- English
- Spelling
- Comprehension

Call today for a FREE assessment

WONTHAGGI
5672 2484

79 Watt Street

kipmcgrath.com.au/wonthaggi

Kip McGrath
EDUCATIONCENTRES

ADVERTISEMENT